

Les nouveaux produits de la dernière édition du catalogue 2008

Demandez le nouveau catalogue
http://www.ilee.ch/FR_unterlagenversand.htm



Achetez meilleur marché et plus simplement chez nous que chez Edmund!

En Francs Suisses

1. Du catalogue USA ou home page Edmund USA, choisir le numéro d'article avec les prix en US\$.
2. Demander une offre chez ILEE AG en Francs Suisse.
3. Commander chez ILEE AG selon votre offre en Francs Suisse départ Urdorf avec importation et dédouanage compris, sur facture*.

Ou en Euros

1. Du catalogue allemand ou home page Edmund DE, choisir le numéro d'article avec les prix en €.
2. Commander chez ILEE AG en € au même prix qu'en Allemagne avec importation et dédouanage compris, sur facture*.

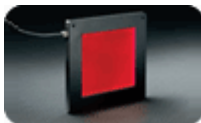
* (Pour les clients sans limite de crédit, le paiement s'effectue à l'avance).

Vous y Trouvez entre autre:



[AVT Stingray/FireWire Cameras](#)

- Excellent Price/Performance Ratio
- High bit-depth (14-bit or 8-bit output, user-selectable)
- VGA(640x480) – 2MP Resolutions Available



[CCS Flat Dome Illuminator](#)

- Even Illumination with Short Working Distance
- Thin Profile Allows Easy Integration
- Ideal for Inspecting Highly Reflective Objects



[CO2 Adj Beam Expander](#)

- Suitable for Power Levels of Up to 100W
- Focus Mechanism with Non-Rotating Optics
- Included Scale to Measure Separation of Lenses



[EO Infinity-Corrected Long Working Distance Objectives](#)

- High Quality Optics in a Plan Apochromat Design
- Long Working Distance Options
- Sub-Micron Resolving Power



[F-Theta Scanning Lenses](#)

- Designed for Nd:YAG (1064nm) and CO₂ (10.6 μm) Laser Sources
- Provides a Flat Field at the Image Plane



[Fisheye Video Lens](#)

- Wide Field of View (185°)
- Fixed Focus
- C-Mount
- Lockable Iris Control



[High Performance ReflIX™ objectives](#)

- Transmitted Wavefront (P-V) 1/4λ
- Tapered Design for Added Clearance at 45° AOI
- Curved Spider Legs to Reduce Diffraction Effects



[In-line Illumination Telecentric Lenses](#)

- Fiber Optic Input for In-line Illumination
- Long Working Distance
- 2/3" Max Sensor Format



[LED Light Engine and Arrays](#)

- High Lumen Output in Small Package
- Software Controllable
- Variable Intensity
- Ideal for High Intensity Light Delivery Applications



[Line Grid Target](#)

- Test and Correction of Distortion in Vision Systems
- Calibration of Perspective Error in Microscope Stages
- Measure Physical Field of View



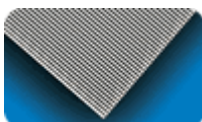
[Piezo Positioner Stage and Controller](#)

- Long Travel Piezo Stage
- Stick-Slip Design
- Ultra-Fine Control



[PIXELINK™ USB2.0 MACHINE VISION CAMERAS](#)

- High Frame Rates
- 0.8, 1.3, 2.0 Megapixel Options Available
- C-Mount
- Applications Developer's Software Included



[Precision Ronchi Rulings on Opal Glass](#)

- Chrome on Opal
- High Tolerance
- English and Metric Versions



[Precision Zero Order Retarders](#)

- Birefringent Polymer
- Achromatic and Zero-order Available
- Less Dispersion than Quartz Waveplates



[Schneider Telecentric Lenses](#)

- Telecentric In Image and Object Space
- Fine Focus Adjustment
- Full Iris Control
- 2/3" Max. Sensor Format
-



[TECHSPEC® ASPHERIZED ACHROMATIC LENSES](#)

- Reduced Spherical and Chromatic Aberration



[TECHSPEC® BeamX™ Laser Beam Expanders](#)

- 532nm, 1064nm, and Broadband Options Available
- Superior Transmitted Wavefront Characteristics
- Wavelength Optimized Designs & Coatings
- High Damage Threshold
- Compact Design For Easy System Integration
- Focusing With No Internal Rotation of Optics



[TECHSPEC® BK7 1/4 Wave Laser Line Windows](#)

- <0.25% Reflection at Design Wavelength
- Coatings Available for HeNe and Nd:YAG Laser Sources
- Precision BK7 Substrate



[TECHSPEC® Broadband Polarizing Cube Beamsplitters](#)

- Designed for VIS and NIR Wavelength Ranges
- 500:1 Extinction Ratio
- AR Coated for R<0.5% per Surface



[TECHSPEC® High Performance Shortpass Filters](#)

- Cut-Off Slope <1%
- High Rejection Efficiency
- = 91% Transmission in Pass Band



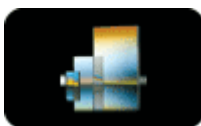
[TECHSPEC® Precision Aspheric Lenses - UV Fused Silica](#)

- Low f/#s for Optimum Light Gathering
- Low Coefficient of Thermal Expansion



[TECHSPEC® UV FUSED SILICA ROD LENSES](#)

- Excellent Transmission from the UV into the NIR
- Available in Diameters from 1mm to 5mm



[Transmission Gratings for Visible Region](#)

- Low Polarization Sensitivity
- Ideal for In-Line Configurations



UV Fused Silica Corner Cube Retroreflectors

- Excellent Transmission in UV
- Thermally Stable
- Useful for Alignment



VZM™ 600i

- 6:1 Zoom Ratio
- Parafoal Zoom
- Increased Depth of Field
- Compact Size: 28mm Dia
- Removable Mounting Flange
- Max. CCD Size 2/3" Format
- Locking Screw for Magnification and Iris
- Rotatable Mount for Camera Orientation

