

Die neusten Produkte aus dem neuen Katalog 2008

Neuen Katalog anfordern

http://www.ilee.ch/DE_unterlagenversand.htm



Bei uns einfacher und günstiger Einkaufen als direkt bei Edmund!

Wie Bestellen : In Franken oder Euro

1. Ab Katalog USA oder Edmund USA Webseite Produktnummer aussuchen. Preise in US\$.
2. Mit Produktnummer bei uns Offerte in Schweizer Franken anfordern.
3. Bei uns ab Werk Urdorf wie gewohnt in Franken einkaufen.
Importiert und verzollt und wie gewohnt gegen Rechnung*.

Oder

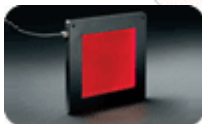
1. Ab Katalog Deutschland oder Edmund DE Webseite Produkt aussuchen. Preise in €.
2. Bei uns ab Werk Urdorf in € zum gleichen € Preis wie in Deutschland einkaufen.
Importiert und verzollt und gegen Rechnung. * (Kunden ohne Kreditlimite gegen Vorauszahlung).

Darin finden Sie unter anderem:



[AVT Stingray/FireWire Cameras](#)

- Excellent Price/Performance Ratio
- High bit-depth (14-bit or 8-bit output, user-selectable)
- VGA(640x480) – 2MP Resolutions Available



[CCS Flat Dome Illuminator](#)

- Even Illumination with Short Working Distance
- Thin Profile Allows Easy Integration
- Ideal for Inspecting Highly Reflective Objects



[CO2 Adj Beam Expander](#)

- Suitable for Power Levels of Up to 100W
- Focus Mechanism with Non-Rotating Optics
- Included Scale to Measure Separation of Lenses



[EO Infinity-Corrected Long Working Distance Objectives](#)

- High Quality Optics in a Plan Apochromat Design
- Long Working Distance Options
- Sub-Micron Resolving Power



[F-Theta Scanning Lenses](#)

- Designed for Nd:YAG (1064nm) and CO₂ (10.6 μm) Laser Sources
- Provides a Flat Field at the Image Plane



Fisheye Video Lens

- Wide Field of View (185°)
- Fixed Focus
- C-Mount
- Lockable Iris Control



High Performance ReflIX™ objectives

- Transmitted Wavefront (P-V) $\frac{1}{4}$ λ
- Tapered Design for Added Clearance at 45° AOI
- Curved Spider Legs to Reduce Diffraction Effects



In-line Illumination Telecentric Lenses

- Fiber Optic Input for In-line Illumination
- Long Working Distance
- 2/3" Max Sensor Format



LED Light Engine and Arrays

- High Lumen Output in Small Package
- Software Controllable
- Variable Intensity
- Ideal for High Intensity Light Delivery Applications



Line Grid Target

- Test and Correction of Distortion in Vision Systems
- Calibration of Perspective Error in Microscope Stages
- Measure Physical Field of View



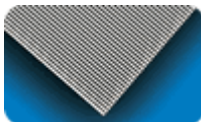
Piezo Positioner Stage and Controller

- Long Travel Piezo Stage
- Stick-Slip Design
- Ultra-Fine Control



PIXELINK™ USB2.0 MACHINE VISION CAMERAS

- High Frame Rates
- 0.8, 1.3, 2.0 Megapixel Options Available
- C-Mount
- Applications Developer's Software Included



Precision Ronchi Rulings on Opal Glass

- Chrome on Opal
- High Tolerance
- English and Metric Versions



Precision Zero Order Retarders

- Birefringent Polymer
- Achromatic and Zero-order Available
- Less Dispersion than Quartz Waveplates



Schneider Telecentric Lenses

- Telecentric In Image and Object Space
- Fine Focus Adjustment
- Full Iris Control
- 2/3" Max. Sensor Format
-



TECHSPEC® ASPHERIZED ACHROMATIC LENSES

- Reduced Spherical and Chromatic Aberration



TECHSPEC® BeamX™ Laser Beam Expanders

- 532nm, 1064nm, and Broadband Options Available
- Superior Transmitted Wavefront Characteristics
- Wavelength Optimized Designs & Coatings
- High Damage Threshold
- Compact Design For Easy System Integration
- Focusing With No Internal Rotation of Optics



TECHSPEC® BK7 1/4 Wave Laser Line Windows

- <0.25% Reflection at Design Wavelength
- Coatings Available for HeNe and Nd:YAG Laser Sources
- Precision BK7 Substrate



TECHSPEC® Broadband Polarizing Cube Beamsplitters

- Designed for VIS and NIR Wavelength Ranges
- 500:1 Extinction Ratio
- AR Coated for R<0.5% per Surface



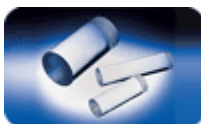
TECHSPEC® High Performance Shortpass Filters

- Cut-Off Slope <1%
- High Rejection Efficiency
- = 91% Transmission in Pass Band



TECHSPEC® Precision Aspheric Lenses - UV Fused Silica

- Low f/#s for Optimum Light Gathering
- Low Coefficient of Thermal Expansion



TECHSPEC® UV FUSED SILICA ROD LENSES

- Excellent Transmission from the UV into the NIR
- Available in Diameters from 1mm to 5mm



Transmission Gratings for Visible Region

- Low Polarization Sensitivity
- Ideal for In-Line Configurations



[UV Fused Silica Corner Cube Retroreflectors](#)

- Excellent Transmission in UV
- Thermally Stable
- Useful for Alignment



[VZM™ 600i](#)

- 6:1 Zoom Ratio
- Parafoal Zoom
- Increased Depth of Field
- Compact Size: 28mm Dia
- Removable Mounting Flange
- Max. CCD Size 2/3" Format
- Locking Screw for Magnification and Iris
- Rotatable Mount for Camera Orientation

